

SALES PLAT THE TRAILS AT BRITANNY PHASE III AND IV

NUMBER	RADIUS	ARC LENGTH	CHORD	CURVE DATA
C1	990.00	239.03	N 83°09'	
C2	990.00	495.21	S 75°36'	
C3	990.00	742.80	N 54°15'	
C4	990.00	990.00	N 54°15'	
C5	990.00	1237.60	N 87°16'	
C6	990.00	1485.41	N 87°16'	
C7	990.00	1733.22	N 87°16'	
C8	990.00	1981.03	N 87°16'	
C9	990.00	2228.84	N 87°16'	
C10	990.00	2476.65	N 87°16'	
C11	990.00	2724.46	N 87°16'	
C12	990.00	2972.27	N 87°16'	
C13	990.00	3220.08	N 87°16'	
C14	990.00	3467.89	N 87°16'	
C15	990.00	3715.70	N 87°16'	
C16	990.00	3963.51	N 87°16'	
C17	990.00	4211.32	N 87°16'	
C18	990.00	4459.13	N 87°16'	
C19	990.00	4706.94	N 87°16'	
C20	990.00	4954.75	N 87°16'	
C21	990.00	5202.56	N 87°16'	
C22	990.00	5450.37	N 87°16'	
C23	990.00	5698.18	N 87°16'	
C24	990.00	5945.99	N 87°16'	
C25	990.00	6193.80	N 87°16'	
C26	990.00	6441.61	N 87°16'	
C27	990.00	6689.42	N 87°16'	
C28	990.00	6937.23	N 87°16'	
C29	990.00	7185.04	N 87°16'	
C30	990.00	7432.85	N 87°16'	
C31	990.00	7680.66	N 87°16'	
C32	990.00	7928.47	N 87°16'	
C33	990.00	8176.28	N 87°16'	
C34	990.00	8424.09	N 87°16'	
C35	990.00	8671.90	N 87°16'	
C36	990.00	8919.71	N 87°16'	
C37	990.00	9167.52	N 87°16'	
C38	990.00	9415.33	N 87°16'	
C39	990.00	9663.14	N 87°16'	
C40	990.00	9910.95	N 87°16'	
C41	990.00	10158.76	N 87°16'	
C42	990.00	10406.57	N 87°16'	
C43	990.00	10654.38	N 87°16'	
C44	990.00	10902.19	N 87°16'	
C45	990.00	11149.99	N 87°16'	
C46	990.00	11397.80	N 87°16'	
C47	990.00	11645.61	N 87°16'	
C48	990.00	11893.42	N 87°16'	
C49	990.00	12141.23	N 87°16'	
C50	990.00	12389.04	N 87°16'	
C51	990.00	12636.85	N 87°16'	
C52	990.00	12884.66	N 87°16'	
C53	990.00	13132.47	N 87°16'	
C54	990.00	13380.28	N 87°16'	
C55	990.00	13628.09	N 87°16'	
C56	990.00	13875.90	N 87°16'	
C57	990.00	14123.71	N 87°16'	
C58	990.00	14371.52	N 87°16'	
C59	990.00	14619.33	N 87°16'	
C60	990.00	14867.14	N 87°16'	
C61	990.00	15114.95	N 87°16'	
C62	990.00	15362.76	N 87°16'	
C63	990.00	15610.57	N 87°16'	
C64	990.00	15858.38	N 87°16'	
C65	990.00	16106.19	N 87°16'	
C66	990.00	16354.00	N 87°16'	
C67	990.00	16601.81	N 87°16'	
C68	990.00	16849.62	N 87°16'	
C69	990.00	17097.43	N 87°16'	
C70	990.00	17345.24	N 87°16'	
C71	990.00	17593.05	N 87°16'	
C72	990.00	17840.86	N 87°16'	
C73	990.00	18088.67	N 87°16'	
C74	990.00	18336.48	N 87°16'	
C75	990.00	18584.29	N 87°16'	
C76	990.00	18832.10	N 87°16'	
C77	990.00	19079.91	N 87°16'	
C78	990.00	19327.72	N 87°16'	
C79	990.00	19575.53	N 87°16'	
C80	990.00	19823.34	N 87°16'	
C81	990.00	20071.15	N 87°16'	
C82	990.00	20318.96	N 87°16'	
C83	990.00	20566.77	N 87°16'	
C84	990.00	20814.58	N 87°16'	
C85	990.00	21062.39	N 87°16'	
C86	990.00	21310.20	N 87°16'	
C87	990.00	21558.01	N 87°16'	
C88	990.00	21805.82	N 87°16'	
C89	990.00	22053.63	N 87°16'	
C90	990.00	22301.44	N 87°16'	
C91	990.00	22549.25	N 87°16'	
C92	990.00	22797.06	N 87°16'	
C93	990.00	23044.87	N 87°16'	
C94	990.00	23292.68	N 87°16'	
C95	990.00	23540.49	N 87°16'	
C96	990.00	23788.30	N 87°16'	
C97	990.00	24036.11	N 87°16'	
C98	990.00	24283.92	N 87°16'	
C99	990.00	24531.73	N 87°16'	
C100	990.00	24779.54	N 87°16'	

LEGEND

— BOUNDARY OF TRACT SUBDIVIDED
 - - - PROPOSED FRONT SETBACK PER OWNER'S CERTIFICATE
 - - - 35'-FRONT YARD
 - - - 35'-REAR YARD
 - - - 12'-SIDE YARD

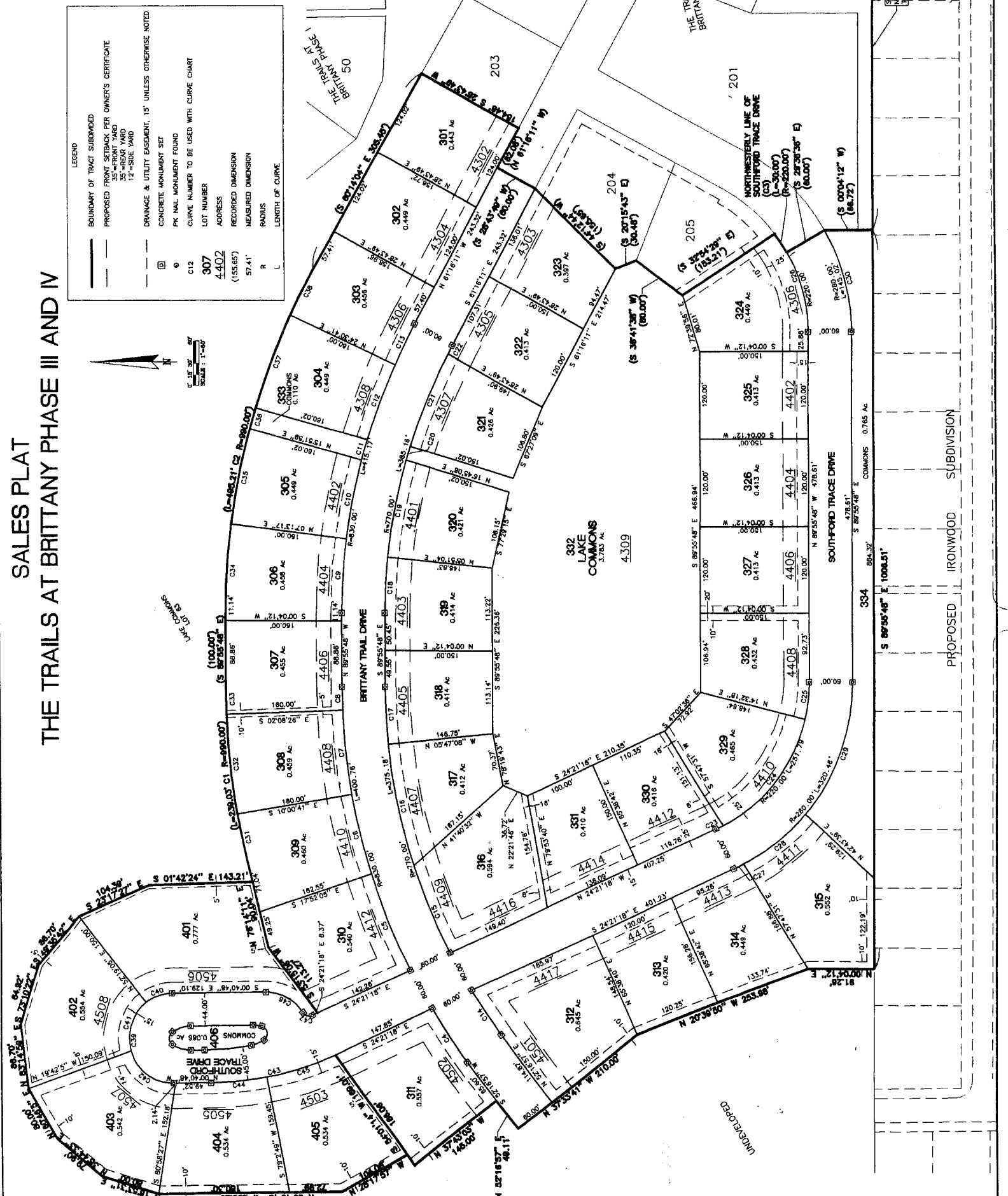
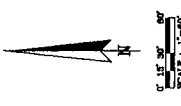
--- DRAINAGE & UTILITY EASEMENT, 15' UNLESS OTHERWISE NOTED

□ CONCRETE MONUMENT SET
 ○ PK NAIL MONUMENT FOUND

○ CURVE NUMBER TO BE USED WITH CURVE CHART

307 LOT NUMBER
 4402 ADDRESS
 (155.657) RECORDED DIMENSION
 57.41' MEASURED DIMENSION

R RADIUS
 L LENGTH OF CURVE



UNRECORDED

COMMONS 206

THE TRAILS AT BRITANNY PHASE II

46

44

45

202

203

204

205

201

301 0.443 Ac

302 0.449 Ac

303 0.456 Ac

304 0.449 Ac

305 0.449 Ac

306 0.458 Ac

307 0.455 Ac

308 0.463 Ac

309 0.440 Ac

310 0.540 Ac

311 0.540 Ac

312 0.645 Ac

313 0.351 Ac

314 0.418 Ac

315 0.552 Ac

316 0.594 Ac

317 0.412 Ac

318 0.414 Ac

319 0.414 Ac

320 0.421 Ac

321 0.428 Ac

322 0.413 Ac

323 0.397 Ac

324 0.449 Ac

325 0.413 Ac

326 0.413 Ac

327 0.413 Ac

328 0.432 Ac

329 0.465 Ac

330 0.416 Ac

331 0.410 Ac

332 LAKE COMMONS 3.783 Ac

333 0.428 Ac

334 884.32'

335 0.418 Ac

336 0.418 Ac

337 0.418 Ac

338 0.418 Ac

339 0.418 Ac

340 0.418 Ac

341 0.418 Ac

342 0.418 Ac

343 0.418 Ac

344 0.418 Ac

345 0.418 Ac

346 0.418 Ac

347 0.418 Ac

348 0.418 Ac

349 0.418 Ac

350 0.418 Ac

351 0.418 Ac

352 0.418 Ac

353 0.418 Ac

354 0.418 Ac

355 0.418 Ac

356 0.418 Ac

357 0.418 Ac

358 0.418 Ac

359 0.418 Ac

360 0.418 Ac

361 0.418 Ac

362 0.418 Ac

363 0.418 Ac

364 0.418 Ac

365 0.418 Ac

366 0.418 Ac

367 0.418 Ac

368 0.418 Ac

369 0.418 Ac

370 0.418 Ac

371 0.418 Ac

372 0.418 Ac

373 0.418 Ac

374 0.418 Ac

375 0.418 Ac

376 0.418 Ac

377 0.418 Ac

378 0.418 Ac

379 0.418 Ac

380 0.418 Ac

381 0.418 Ac

382 0.418 Ac

383 0.418 Ac

384 0.418 Ac

385 0.418 Ac

386 0.418 Ac

387 0.418 Ac

388 0.418 Ac

389 0.418 Ac

390 0.418 Ac

391 0.418 Ac

392 0.418 Ac

393 0.418 Ac

394 0.418 Ac

395 0.418 Ac

396 0.418 Ac

397 0.418 Ac

398 0.418 Ac

399 0.418 Ac

400 0.418 Ac

401 0.777 Ac

402 0.554 Ac

403 0.542 Ac

404 0.534 Ac

405 0.334 Ac

406 0.088 Ac

408 0.458 Ac

409 0.458 Ac

410 0.458 Ac

411 0.458 Ac

412 0.458 Ac

413 0.458 Ac

414 0.458 Ac

415 0.458 Ac

416 0.458 Ac

418 0.458 Ac

419 0.458 Ac

420 0.458 Ac

421 0.458 Ac

422 0.458 Ac

423 0.458 Ac

424 0.458 Ac

425 0.458 Ac

426 0.458 Ac

428 0.458 Ac

429 0.458 Ac

430 0.458 Ac

431 0.458 Ac

432 0.458 Ac

433 0.458 Ac

434 0.458 Ac

435 0.458 Ac

436 0.458 Ac

438 0.458 Ac

439 0.458 Ac

440 0.458 Ac

441 0.458 Ac

442 0.458 Ac

443 0.458 Ac

444 0.458 Ac

445 0.458 Ac

446 0.458 Ac

448 0.458 Ac

449 0.458 Ac

450 0.458 Ac

451 0.458 Ac

452 0.458 Ac

453 0.458 Ac

454 0.458 Ac

455 0.458 Ac

456 0.458 Ac

458 0.458 Ac

459 0.458 Ac

460 0.458 Ac

461 0.458 Ac

462 0.458 Ac

463 0.458 Ac

464 0.458 Ac

465 0.458 Ac

466 0.458 Ac

468 0.458 Ac

469 0.458 Ac

470 0.458 Ac

471 0.458 Ac

472 0.458 Ac

473 0.458 Ac

474 0.458 Ac

475 0.458 Ac

476 0.458 Ac

478 0.458 Ac

479 0.458 Ac

480 0.458 Ac

481 0.458 Ac

482 0.458 Ac

483 0.458 Ac

484 0.458 Ac

485 0.458 Ac

486 0.458 Ac

488 0.458 Ac

489 0.458 Ac

490 0.458 Ac

491 0.458 Ac

492 0.458 Ac

493 0.458 Ac

494 0.458 Ac

495 0.458 Ac

496 0.458 Ac

498 0.458 Ac

499 0.458 Ac

500 0.458 Ac

501 0.458 Ac

502 0.458 Ac

503 0.458 Ac

504 0.458 Ac

505 0.458 Ac

506 0.458 Ac

508 0.458 Ac

509 0.458 Ac

510 0.458 Ac

511 0.458 Ac

512 0.458 Ac

513 0.458 Ac

514 0.458 Ac

515 0.458 Ac

516 0.458 Ac

517 0.458 Ac

518 0.458 Ac

519 0.458 Ac

520 0.458 Ac

521 0.458 Ac

522 0.458 Ac

523 0.458 Ac

524 0.458 Ac

525 0.458 Ac

526 0.458 Ac

527 0.458 Ac

528 0.458 Ac

529 0.458 Ac

530 0.458 Ac

531 0.458 Ac

532 0.458 Ac

533 0.458 Ac

534 0.458 Ac

535 0.458 Ac

536 0.458 Ac

537 0.458 Ac

538 0.458 Ac

539 0.458 Ac

540 0.458 Ac

541 0.458 Ac

542 0.458 Ac

543 0.458 Ac

544 0.458 Ac

545 0.458 Ac

546 0.458 Ac

547 0.458 Ac

548 0.458 Ac

549 0.458 Ac

550 0.458 Ac

551 0.458 Ac

552 0.458 Ac

553 0.458 Ac

554 0.458 Ac

555 0.458 Ac

556 0.458 Ac

557 0.458 Ac

558 0.458 Ac

559 0.458 Ac

560 0.458 Ac

561 0.458 Ac

562 0.458 Ac

563 0.458 Ac

564 0.458 Ac

565 0.458 Ac

566 0.458 Ac

567 0.458 Ac

568 0.458 Ac

569 0.458 Ac

570 0.458 Ac

571 0.458 Ac

572 0.458 Ac

573 0.458 Ac

574 0.458 Ac

575 0.458 Ac

576 0.458 Ac

577 0.458 Ac

578 0.458 Ac

579 0.458 Ac

580 0.458 Ac

581 0.458 Ac

582 0.458 Ac

583 0.458 Ac

584 0.458 Ac

585 0.458 Ac

586 0.458 Ac

587 0.458 Ac

588 0.458 Ac

589 0.458 Ac

590 0.458 Ac

591 0.458 Ac

592 0.458 Ac

593 0.458 Ac

594 0.458 Ac

595 0.458 Ac

596 0.458 Ac

597 0.458 Ac

598 0.458 Ac

599 0.458 Ac

600 0.458 Ac

601 0.458 Ac

602 0.458 Ac

603 0.458 Ac

604 0.458 Ac

605 0.458 Ac

606 0.458 Ac

607 0.458 Ac

608 0.458 Ac

609 0.458 Ac

610 0.458 Ac

611 0.458 Ac

612 0.458 Ac

613 0.458 Ac

614 0.458 Ac

615 0.458 Ac

616 0.458 Ac

617 0.458 Ac

618 0.458 Ac

619 0.458 Ac

620 0.458 Ac

621 0.458 Ac

622 0.458 Ac

623 0.458 Ac

624 0.458 Ac

625 0.458 Ac

626 0.458 Ac

627 0.458 Ac

628 0.458 Ac

629 0.458 Ac

630 0.458 Ac

631 0.458 Ac

632 0.458 Ac

633 0.458 Ac

634 0.458 Ac

635 0.458 Ac

636 0.458 Ac

637 0.458 Ac

638 0.458 Ac

639 0.458 Ac

640 0.458 Ac

641 0.458 Ac

642 0.458 Ac

643 0.458 Ac

644 0.458 Ac

645 0.458 Ac

646 0.458 Ac

647 0.458 Ac

648 0.458 Ac

649 0.458 Ac

650 0.458 Ac

651 0.458 Ac

652 0.458 Ac

653 0.458 Ac

654 0.458 Ac

655 0.458 Ac

656 0.458 Ac

657 0.458 Ac

658 0.458 Ac

659 0.458 Ac

660 0.458 Ac

661 0.458 Ac

662 0.458 Ac

663 0.458 Ac

664 0.458 Ac

665 0.458 Ac

666 0.458 Ac

667 0.458 Ac

668 0.458 Ac

669 0.458 Ac

670 0.458 Ac

671 0.458 Ac

672 0.458 Ac

673 0.458 Ac

674 0.458 Ac

675 0.458 Ac

676 0.458 Ac

677 0.458 Ac

678 0.458 Ac

679 0.458 Ac

680 0.458 Ac

681 0.458 Ac

682 0.458 Ac

683 0.458 Ac

684 0.458 Ac

685 0.458 Ac

686 0.458 Ac

687 0.458 Ac

688 0.458 Ac

689 0.458 Ac

690 0.458 Ac

691 0.458 Ac

692 0.458 Ac

693 0.458 Ac

694 0.458 Ac

695 0.458 Ac

696 0.458 Ac

697 0.458 Ac

698 0.458 Ac

699 0.458 Ac

700 0.458 Ac

701 0.458 Ac

702 0.458 Ac

703 0.458 Ac

704 0.458 Ac

705 0.458 Ac

706 0.458 Ac

707 0.458 Ac

708 0.458 Ac

709 0.458 Ac

710 0.458 Ac

711 0.458 Ac

712 0.458 Ac

713 0.458 Ac

714 0.458 Ac

715 0.458 Ac

716 0.458 Ac

717 0.458 Ac