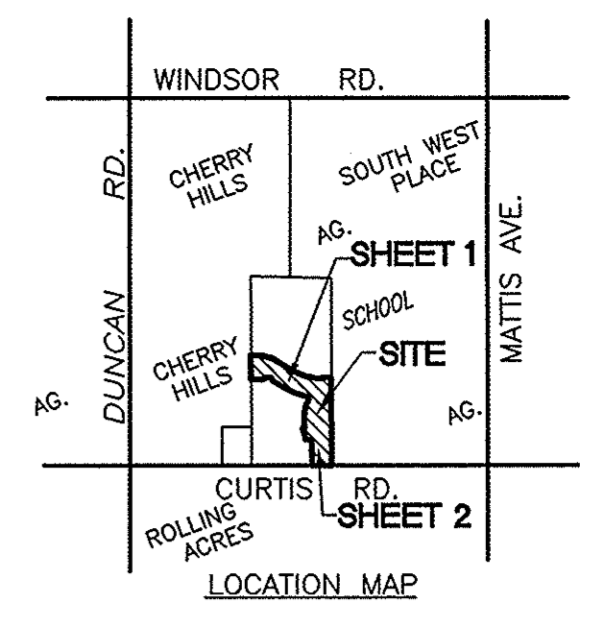


PRESENTED FOR RECORDING BY: CHICAGO TITLE INSURANCE CO.  
 RETURN TO: HDC ENGINEERING, INC.

# FINAL PLAT

## OF CHERRY HILLS ELEVENTH

AN ADDITION TO THE CITY OF CHAMPAIGN, CHAMPAIGN COUNTY, ILLINOIS  
 A PART OF THE EAST 3/4 OF THE EAST 1/2 OF THE SOUTHWEST 1/4,  
 AND THE W 1/2, W 1/2, W 1/2, OF THE SE 1/4,  
 OF SECTION 27, T. 19 N., R. 8 E., THIRD P.M.



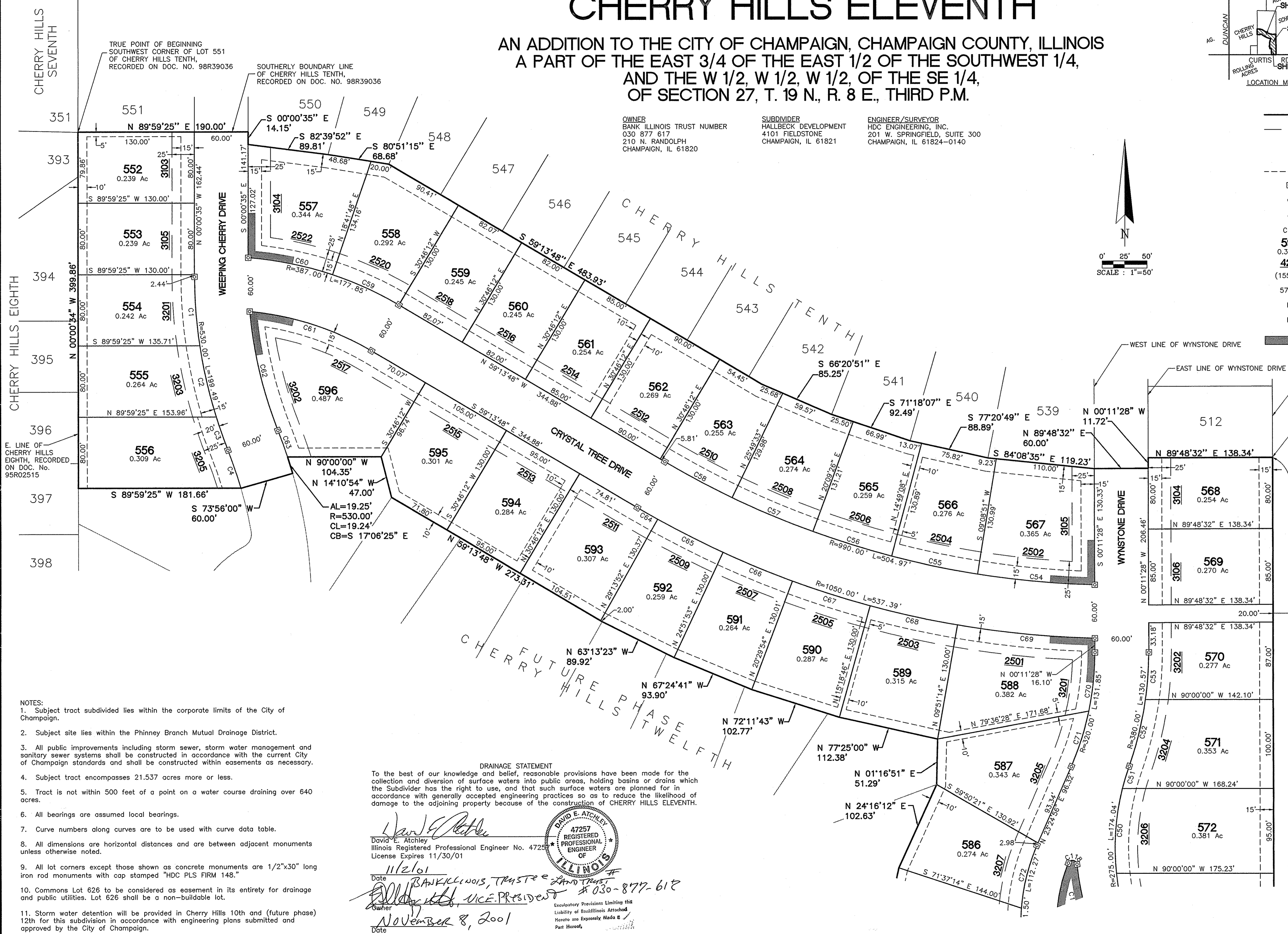
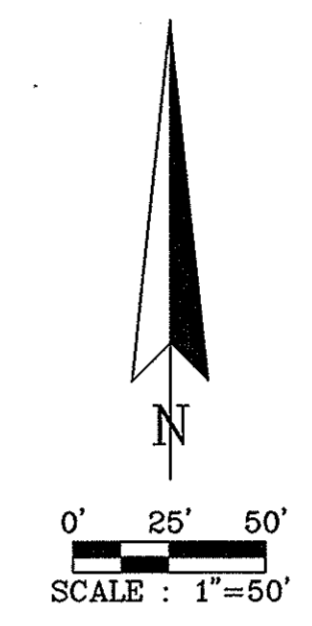
SPACE RESERVED FOR  
 RECORDER'S STAMP

**OWNER**  
 BANK ILLINOIS TRUST NUMBER  
 030 877 617  
 210 N. RANDOLPH  
 CHAMPAIGN, IL 61820

**SUBDIVIDER**  
 HALLBECK DEVELOPMENT  
 4101 FIELDSTONE  
 CHAMPAIGN, IL 61821

**ENGINEER/SURVEYOR**  
 HDC ENGINEERING, INC.  
 201 W. SPRINGFIELD, SUITE 300  
 CHAMPAIGN, IL 61824-0140

- LEGEND**
- BOUNDARY OF TRACT SUBDIVIDED
  - PROPOSED FRONT SETBACK PER OWNER'S CERTIFICATE  
 25'=FRONT  
 25'=REAR  
 10'=SIDE
  - - - DRAINAGE & UTILITY EASEMENT, 15' UNLESS OTHERWISE NOTED
  - ⊠ CONCRETE MONUMENT SET
  - ⊙ PK NAIL MONUMENT FOUND
  - IRON PIN FOUND
  - C12 CURVE NUMBER TO BE USED WITH CURVE CHART
  - 590 LOT NUMBER W/ ACREAGE
  - 4208 ADDRESS
  - (155.65') RECORDED DIMENSION
  - 57.41' MEASURED DIMENSION
  - L ARC LENGTH
  - R RADIUS
  - ACCESS CONTROL  
 50' FROM R.O.W. INTERSECTION  
 UNLESS OTHERWISE SHOWN



- NOTES:**
1. Subject tract subdivided lies within the corporate limits of the City of Champaign.
  2. Subject site lies within the Phinney Branch Mutual Drainage District.
  3. All public improvements including storm sewer, storm water management and sanitary sewer systems shall be constructed in accordance with the current City of Champaign standards and shall be constructed within easements as necessary.
  4. Subject tract encompasses 21.537 acres more or less.
  5. Tract is not within 500 feet of a point on a water course draining over 640 acres.
  6. All bearings are assumed local bearings.
  7. Curve numbers along curves are to be used with curve data table.
  8. All dimensions are horizontal distances and are between adjacent monuments unless otherwise noted.
  9. All lot corners except those shown as concrete monuments are 1/2"x30" long iron rod monuments with cap stamped "HDC PLS FIRM 148."
  10. Commons Lot 626 to be considered as easement in its entirety for drainage and public utilities. Lot 626 shall be a non-buildable lot.
  11. Storm water detention will be provided in Cherry Hills 10th and (future phase) 12th for this subdivision in accordance with engineering plans submitted and approved by the City of Champaign.

**DRAINAGE STATEMENT**

To the best of our knowledge and belief, reasonable provisions have been made for the collection and diversion of surface waters into public areas, holding basins or drains which the Subdivider has the right to use, and that such surface waters are planned for in accordance with generally accepted engineering practices so as to reduce the likelihood of damage to the adjoining property because of the construction of CHERRY HILLS ELEVENTH.

David E. Atchley  
 Illinois Registered Professional Engineer No. 47257  
 License Expires 11/30/01

11/2/01  
 David E. Atchley, VICE-PRESIDENT  
 November 8, 2001

DAVID E. ATCHLEY  
 47257  
 REGISTERED  
 PROFESSIONAL  
 ENGINEER  
 OF  
 ILLINOIS

Exculpatory Provisions Limiting the Liability of the Subdivider Herein are Expressly Made a Part Hereof.

APPROVED:  
 THE CITY COUNCIL OF THE CITY OF CHAMPAIGN, ILLINOIS  
 IN ACCORDANCE WITH THE COUNCIL BILL NO. 2001-271

DATE: 12/7/01 BY: *Paul S. Kelly*

ATTEST: *Marilyn Banks*  
 CLERK

HDC ENGINEERING, INC.  
 201 West Springfield, Suite 300,  
 Champaign, Illinois 61824-0140  
 Phone No. 217-352-6976  
 Professional Engineering Corp. License No. 184-000131  
 Professional License Expires: 4/30/2003  
 Field Book:  
 Project Number: 01084

Drawn Date: 10/10/01  
 Revision Date:  
 Revision Date:  
 Revision Date:

sheet 1 of 2