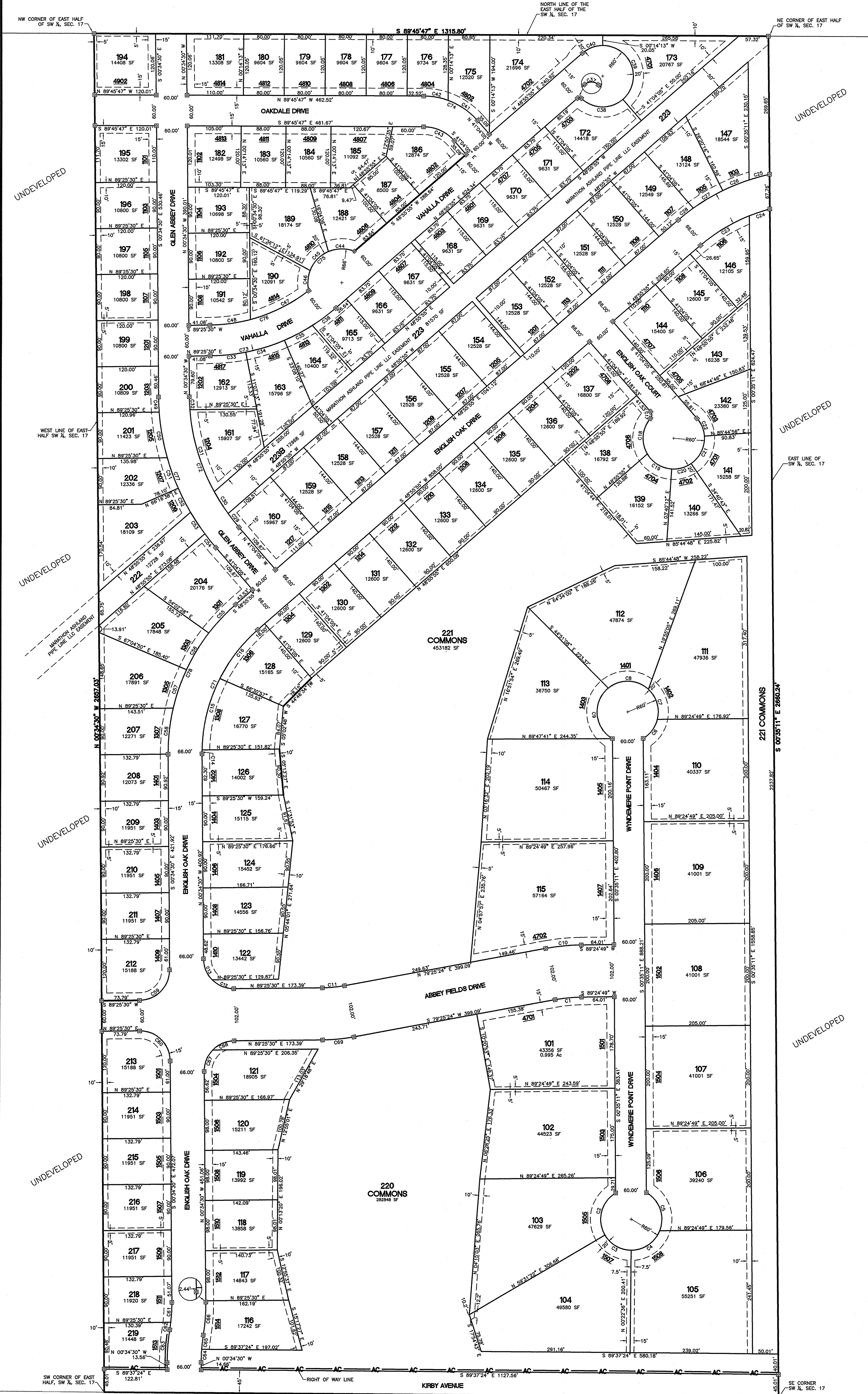
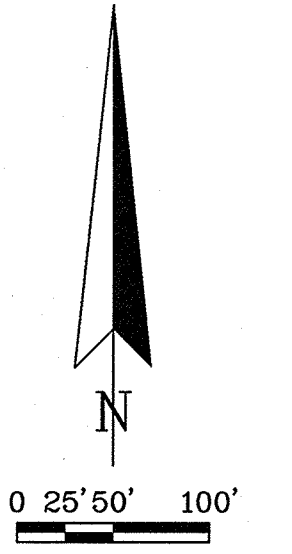


# TRAILS AT ABBEY FIELDS

A PART OF THE WEST HALF OF SECTION 17, T19N, R8E, 3rd PM  
CHAMPAIGN COUNTY, CHAMPAIGN, ILLINOIS



**LEGEND**

- AC — ACCESS CONTROL
- - - - EASEMENT LINE
- 4800** STREET ADDRESS
- CONCRETE MONUMENT

LOT CURVE DATA				
NUMBER	RADIUS	ARC LENGTH	CHORD LENGTH	CHORD BEARING
C1	299.00	52.13	52.07	N 84°25'06" E
C2	60.00	94.60	85.10	S 14°14'43" W
C3	60.00	61.87	59.16	S 60°27'41" E
C4	60.00	71.31	67.19	N 55°57'07" E
C5	60.00	86.38	79.11	N 19°20'28" W
C6	60.00	47.59	46.36	N 36°41'20" E
C7	60.00	64.43	61.38	N 16°47'52" W
C8	60.00	85.72	78.61	N 88°29'10" W
C9	60.00	116.42	99.00	S 04°59'58" E
C10	401.00	69.92	69.83	S 84°25'06" W
C11	249.00	43.47	43.41	S 84°25'27" W
C12	59.00	46.82	45.60	N 22°50'28" W
C13	59.00	45.86	44.71	N 22°50'28" W
C14	317.00	7.71	7.70	N 00°07'17" E
C15	317.00	144.91	143.65	N 13°54'48" E
C16	317.00	121.29	120.55	N 37°58'14" E
C17	10.00	14.27	13.09	S 00°10'28" E
C18	60.00	74.77	70.03	S 05°01'06" W
C19	60.00	58.27	56.01	S 58°30'22" E
C20	60.00	40.16	39.41	N 74°29'44" E
C21	60.00	62.38	59.61	N 25°32'06" E
C22	60.00	38.57	37.91	N 22°39'54" W
C23	337.00	111.70	111.19	N 58°25'38" E
C24	337.00	42.07	42.04	N 58°25'38" E
C25	403.00	41.41	41.39	S 74°31'03" W
C26	403.00	55.65	55.60	S 67°37'05" W
C27	403.00	66.67	66.60	S 58°55'21" W
C28	403.00	36.93	36.92	S 51°33'27" W
C29	395.00	34.38	34.37	N 38°34'29" W
C30	395.00	50.61	50.58	N 32°24'39" W
C31	395.00	168.75	167.47	N 16°30'05" W
C32	395.00	25.42	25.42	N 02°25'07" W
C33	380.00	69.94	69.84	N 84°09'08" E
C34	380.00	79.69	79.55	N 72°52'19" E
C35	380.00	61.61	61.54	N 62°13'10" E
C36	380.00	57.32	57.27	N 53°15'13" E
C37	5.00	7.47	6.79	S 88°16'26" E
C38	60.00	89.63	81.52	S 88°16'26" E
C39	60.00	145.49	112.38	N 20°32'02" W
C40	60.00	43.01	42.09	S 69°27'57" W
C41	140.00	70.54	69.80	N 55°30'10" W
C42	140.00	48.44	48.20	N 79°51'01" W
C43	80.00	67.99	65.96	S 65°24'56" E
C44	66.00	51.91	50.58	S 89°21'52" W
C45	66.00	52.73	51.34	S 43°56'47" W
C46	66.00	39.87	39.27	S 03°45'16" W
C47	320.00	128.66	127.80	S 63°37'45" W
C48	320.00	79.74	79.53	S 82°17'11" W
C49	455.00	29.56	29.56	S 02°26'11" E
C50	455.00	91.40	91.25	S 10°03'08" E
C51	455.00	62.84	62.79	S 19°45'48" E
C52	455.00	52.94	52.91	S 27°03'11" E
C53	455.00	50.46	50.43	S 33°33'48" E
C54	455.00	34.37	34.36	S 38°54'15" E
C55	383.00	77.21	77.08	S 43°09'25" W
C56	383.00	83.43	83.27	S 31°08'29" W
C57	383.00	79.44	79.30	S 18°57'30" W
C58	383.00	90.85	90.64	S 06°13'14" W
C59	59.00	92.68	83.44	S 44°25'30" W
C60	59.00	92.68	83.44	S 44°25'30" W
C61	317.00	39.03	39.01	S 02°57'09" W
C62	317.00	14.61	14.61	S 07°48'03" W
C63	383.00	64.82	64.74	S 04°16'23" W
C64	317.00	25.36	25.35	N 01°43'01" E
C65	317.00	28.29	28.28	N 06°33'54" E
C66	383.00	64.82	64.74	N 04°16'23" E
C67	59.00	45.86	44.71	N 21°41'35" E
C68	59.00	46.82	45.60	N 66°41'35" E
C69	351.00	61.27	61.19	N 84°25'27" E
C70	317.00	273.91	265.47	N 24°10'43" E
C71	317.00	273.91	265.47	N 24°10'43" E
C72	395.00	279.13	273.36	N 20°49'10" W
C73	380.00	149.63	148.67	N 78°08'40" E
C74	140.00	118.98	115.44	N 65°24'56" W
C75	66.00	144.51	117.32	S 49°10'21" W
C76	320.00	208.40	204.74	S 70°46'04" W
C77	455.00	321.56	314.91	S 20°49'17" E
C78	383.00	330.94	320.74	S 24°10'43" W

COMMONS LOT 251	182 COMMONS							
203	202	201	177					
134	135	136	137	138	139	140	141	142

EXCEPTION  
2.13 Ac  
DOC. NO. 2001R37810